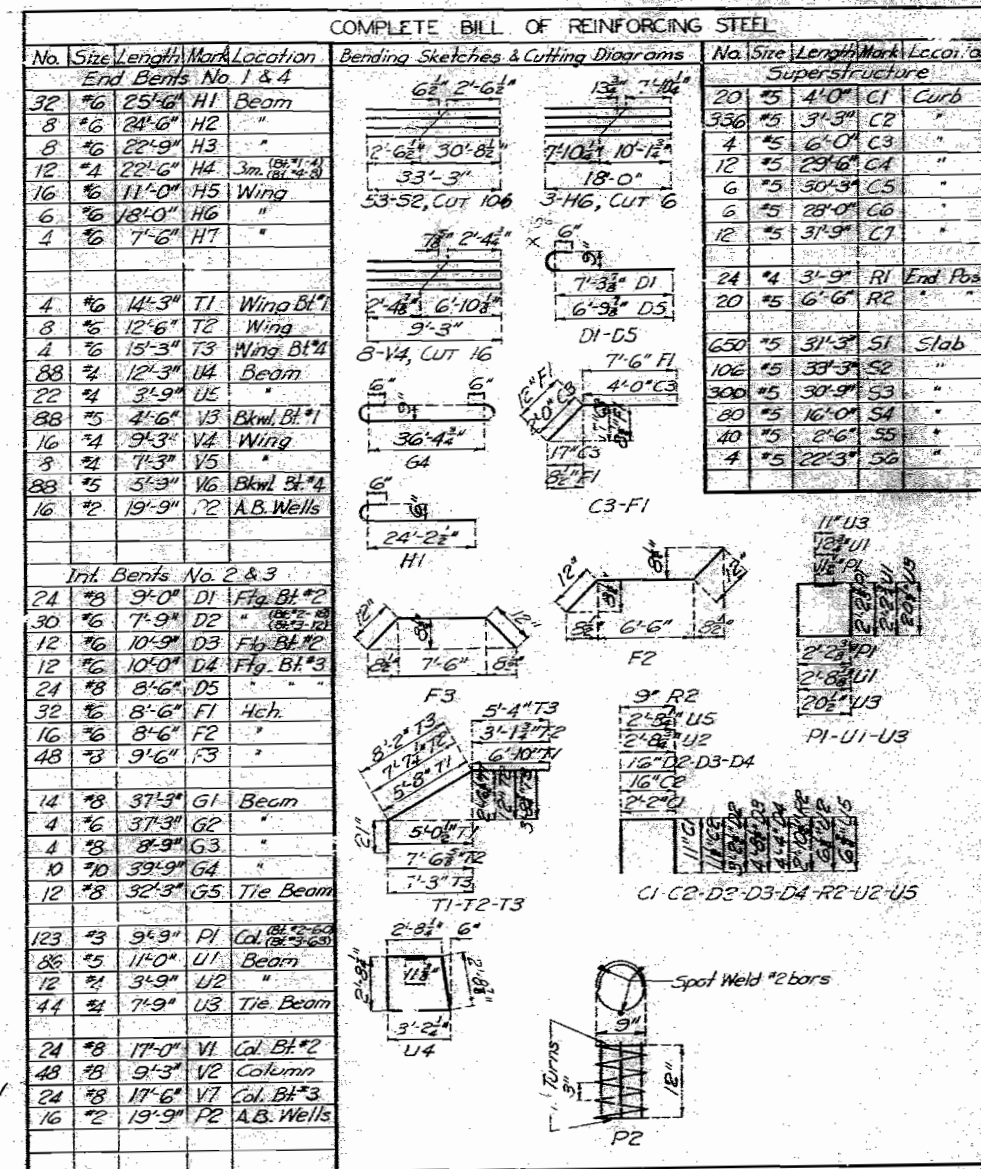


FED. ROAD DIST. NO.	STATE	FED. AID PROJ. NO.	FISCAL YEAR	SHEET NO.	TOTAL SHEET
5	MO.		19	48	



ESTIMATED QUANTITIES			
Item	Substr.	Superstr.	Total
Class I Excavation for Structures	Cu.Yds. 280		280
Class "B" Concrete	Cu.Yds. 155.5		155.5
Class "B-1" Concrete	Cu.Yds.	135.7	135.7
Reinforcing Steel	Lbs. 17,950	38,590	56,540
Fabricated Structural Steel	Lbs.	130,140	130,140
Steel Castings	Lbs.	2740	2740
Concrete Pile-in-place	Lin.Ft. 1550		1550

GENERAL NOTES:

Design Specifications: A.A.S.H.O. -1953

Loading: H20-44

Structural Steel Stress: 18,000%*

Reinforcing Steel Stress: 20,000%*

Concrete, Class "B" Stress: 1200%*

Concrete for superstructure shall be Class "B-1" air-entrained. (See Special Provisions).

Concrete for substructure shall be Class "B", air-entrained. If the Contractor desires, he may use Class "B-1" in lieu of Class "B" for concrete in substructure with payment on the basis of Class "B" concrete.

Rivets $\frac{7}{8}$ " holes $\frac{7}{8}$ " except as noted.

Paint: Shop, none; Field, contact surfaces of bolted field connections one coat of red lead and surfaces inaccessible after erection three coats of red lead.

All other exposed surfaces first coat red lead, second coat brown, third coat aluminum. Payment for cleaning and painting such surfaces will be included in price bid for items painted.

Steel Shells for Cast-in-place Piles shall be painted as specified for steel piles in Section 22-9C of the Standard Specifications.

Where joint filler is specified on the plans it shall conform with the requirements for Gray Rubber Compound Joints as given in Section 59-22B of the Standard Specifications.

Field connections shall be riveted or if the Contractor desires he may use high tensile steel bolts with carburized washers in place of rivets except for connections noted in handrail details. See Standard Specifications.

If high tensile steel bolts are used they shall be placed in such a manner that the nuts will always be in the least exposed position.

Qualification of welding operators will be required.

A rubbed surface finish will be required on all exposed surfaces of concrete end posts above top of curb.

A minimum vertical clearance of 22'-0" from top of rails and a minimum lateral clearance of 8'-6" from centerline of tracks shall be maintained over railroad tracks during construction.

B.M. Elev. 988.99 X Nails in S.E. Root of Tripple Elm $\pm 60'$ Rt.
Sta. 339+40 (U.S.G.S. Datum).

BRIDGE OVER WABASH RAILROAD
STATE ROAD FROM LIVONIA EAST TO ROUTE 6
ABOUT 2.5 MILES S. OF GLENWOOD
PROJECT NO. FG-302 (7) (RTE. 135) STA. 334 + 62.94
SCHUYLER COUNTY FINISHED

SUBMITTED BY J. A. Williams DATE 11-15-1957
APPROVED BY Red M. Whitten DATE 11-15-1957

Drawn Mar. 1957 by M.H.P.
 Glocked Mar. 1957 by A.F.K.

Note: This drawing is not to scale. Follow dimensions.

Sheet No. 1 of 7

SEE FINAL PLANS BROWN-LINES

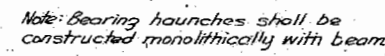
STD. C-1108
A-116

THE

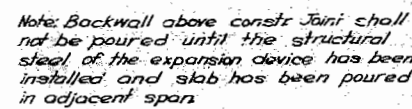
394

A-116

FED. ROAD DIST. NO.	STATE	FED. AID PROJ. NO.	FISCAL YEAR	SHEET NO.	TOTAL SHEETS
5	40		19	50	



DETAILS OF END BENT NO. 4



SECTION NEAR C



Symm. abt & Bent. except as shown.



PLAN OF 5-PILE FOOTING
SHOWING REINFORCING

SCHUYLER COUNTY

1540

Note: This drawing is not to scale. Allow dimensions.

Sheet No. 3 of 7.

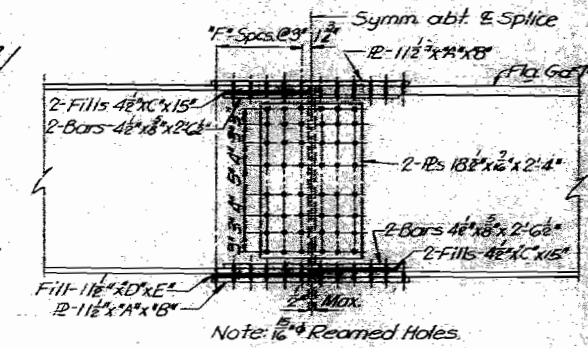
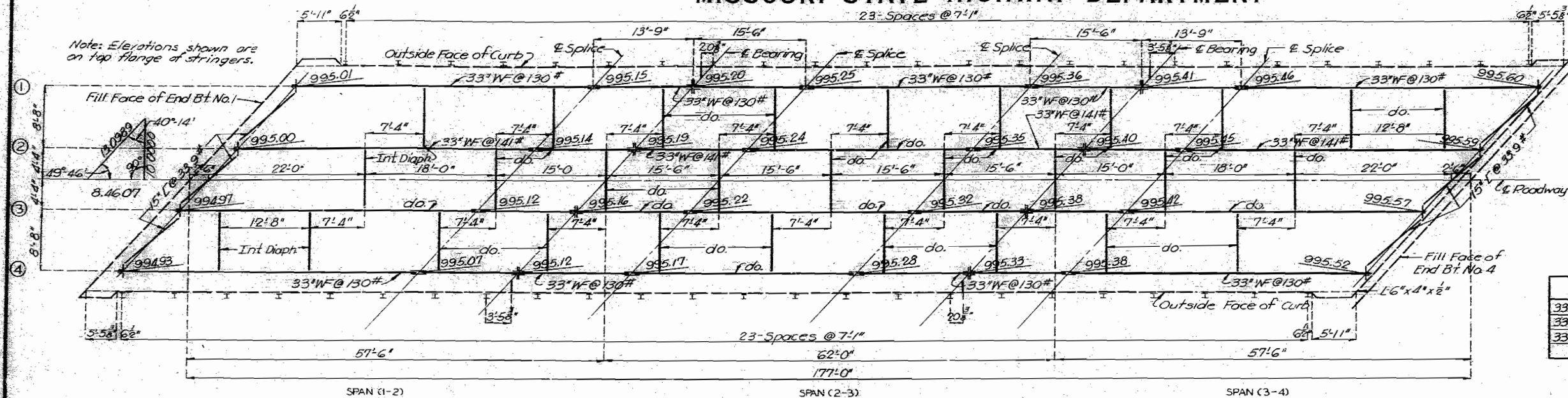
NO CONSTRUCTION CHANGES

5 Col. Int. } H15, 420
Square or skewed } 420-S16

A-116

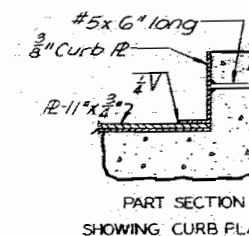
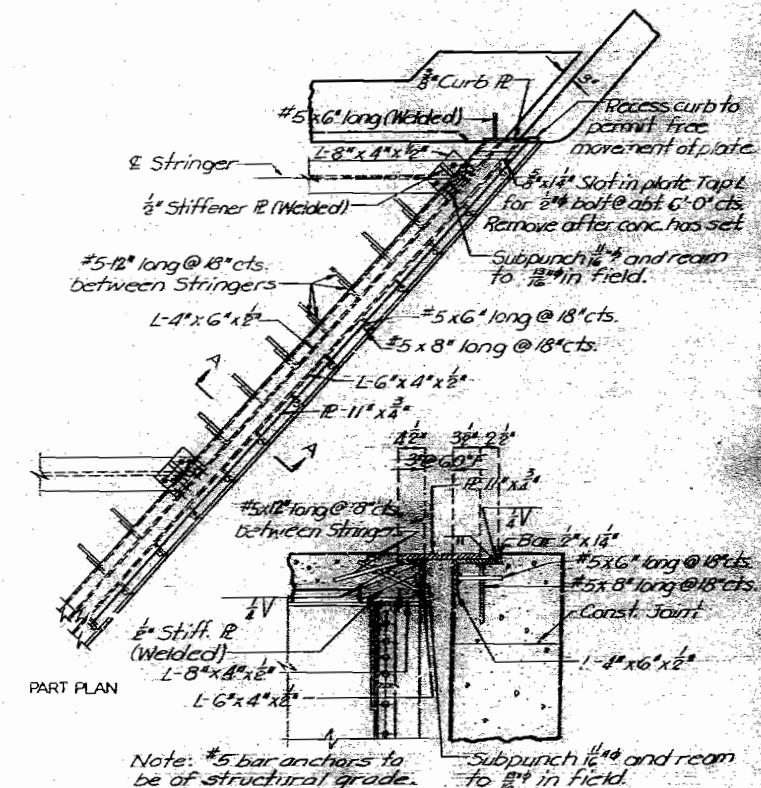
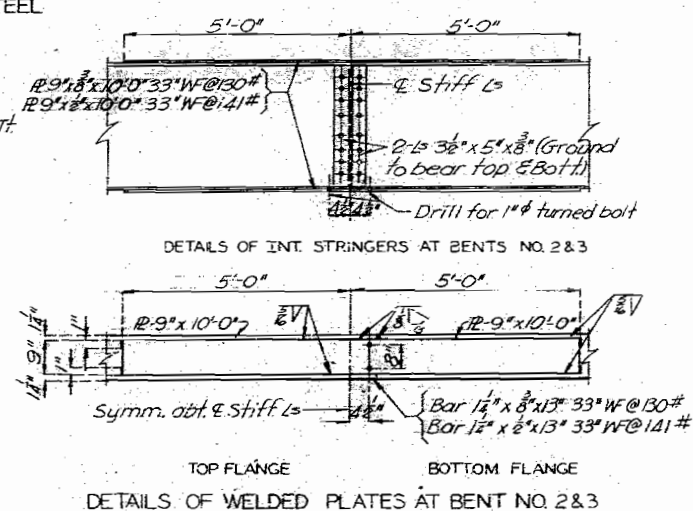
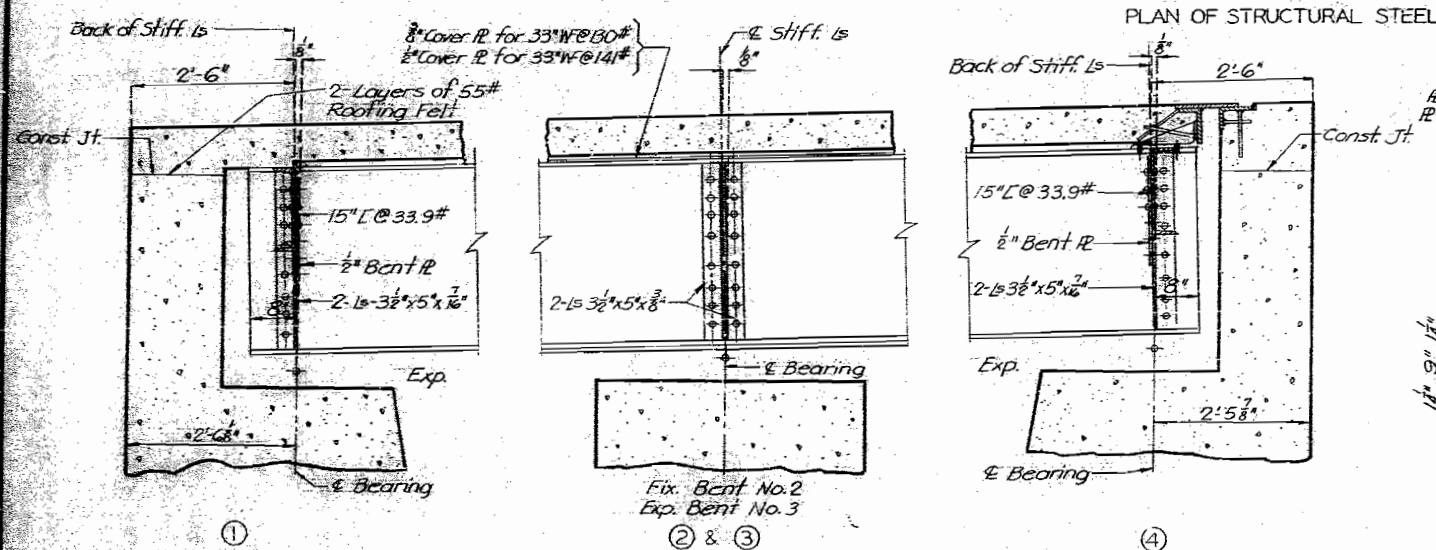
MISSOURI STATE HIGHWAY DEPARTMENT

FED. ROAD DIST. NO.	STATE	FED. AID PROJ. NO.	FISCAL YEAR	SHEET NO.	TOTAL SHEETS
5	MO.		19	51	

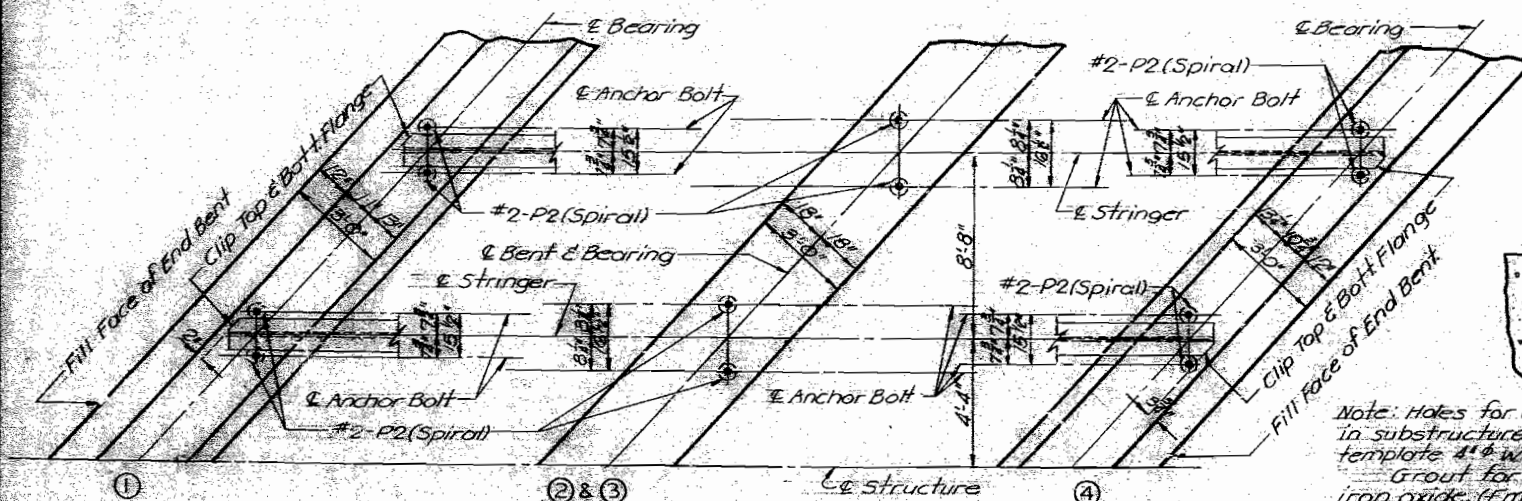


	"A"	"B"	"C"	"D"	"E"	"F"
33" WF @ 130# to 130#	3'	3'-0"	12'-0"	5'-0"	18"	5'
33" WF @ 130# to 141#	3'	3'-0"	12'-0"	5'-0"	18"	5'
33" WF @ 141# to 141#	3'	3'-0"	12'-0"	5'-0"	18"	5'

DETAILS OF FIELD SPLICES



DETAILS OF EXPANSION DEVICE BENT NO. 4



Note: Notes for all anchor bolts shall be formed in substructure by placing and setting with template 4" wells of depth shown. Grout for anchor bolt wells shall contain iron oxide. (Embeco or an approved equivalent).

Part Section Showing Anchor Bolt Well

BRIDGE OVER WABASH RAILROAD

STATE ROAD FROM LIVONIA EAST TO ROUTE 63
ABOUT 2.5 MILES S. OF GLENWOOD
PROJECT NO. FG-302(7) (RTE. 136) STA. 334+62.94

SCHUYLER

COUNTY

Drawn FEB. 1957 by WGS
Checked Mar. 1957 by J.F.K.

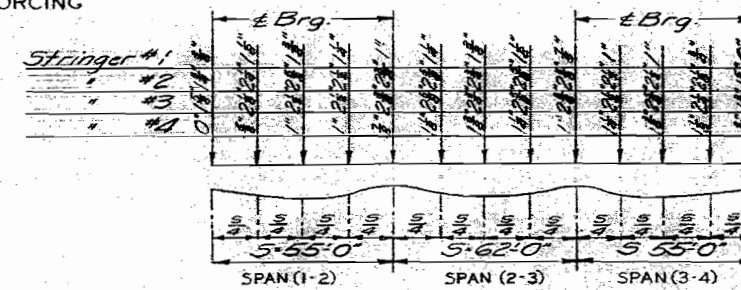
Note: This drawing is not to scale. Follow dimensions.

Sheet No. 4 of 7.

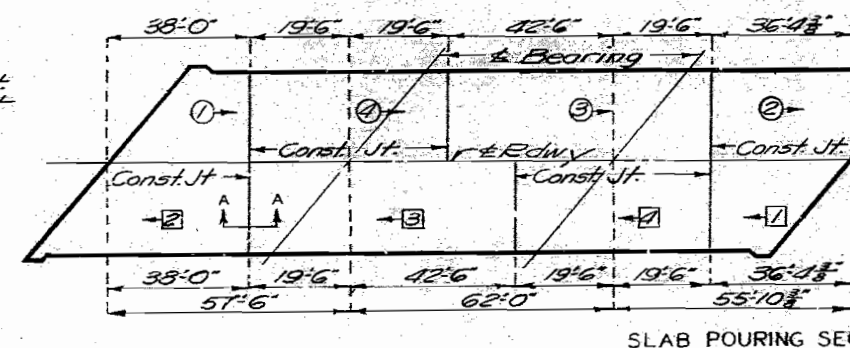
NO CONSTRUCTION CHANGES

A-116

FED. ROAD DIST. NO.	STATE	FED. AID PROJ. NO.	FISCAL YEAR	SHEET NO.	TOTAL SHEETS
5	MO.		19	52	



SLAB HAUNCHING DIAGRAM



SLAB POURING SEQUENCE

Finish each side of joint with $\frac{1}{8}$ rad. edging tool. Fill groove with joint seal.



SECTION A-A

FINISHED

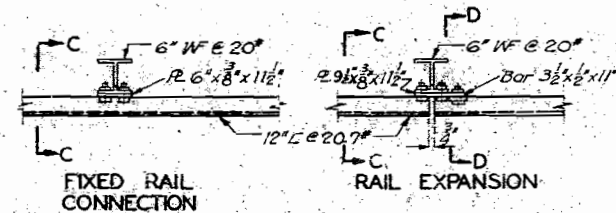
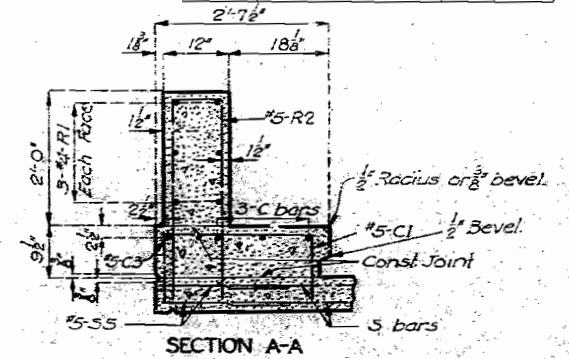
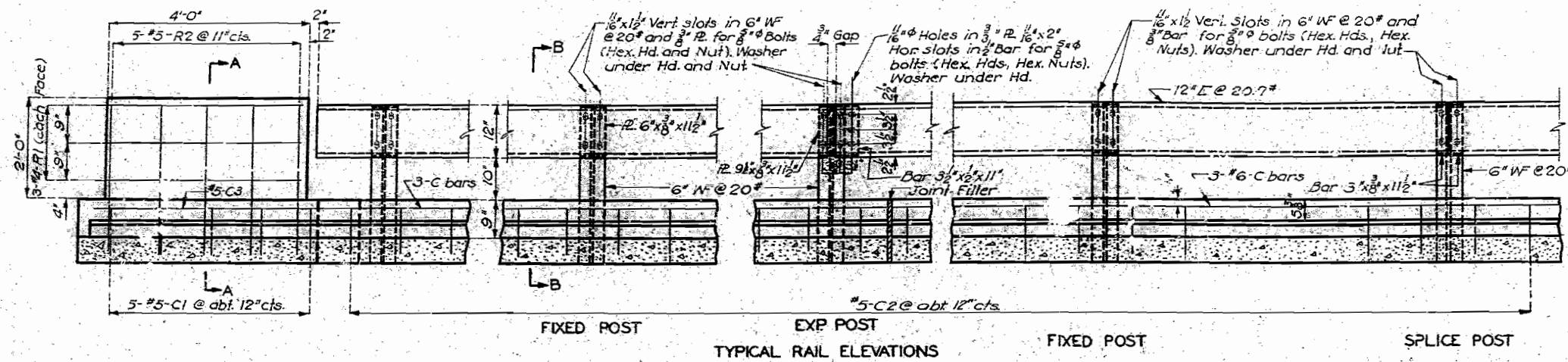
Sheet No. 5 of 8

A-116

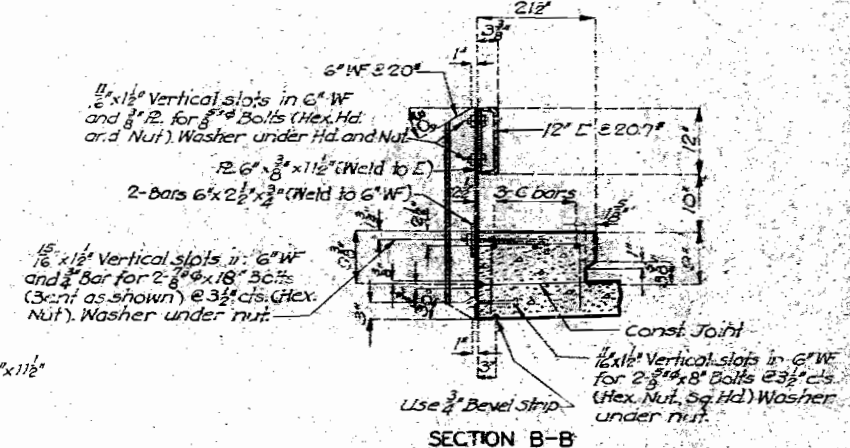
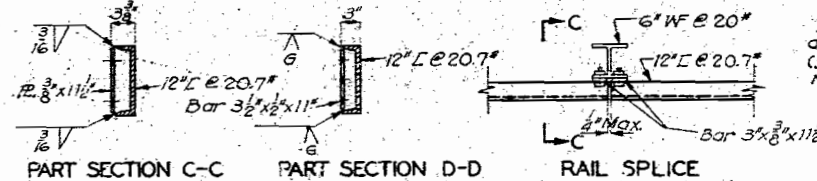
Note: This drawing is not to scale. Follow dimensions.

MISSOURI STATE HIGHWAY DEPARTMENT

FED. ROAD DIST. NO.	STATE	FED. AID PROJ. NO.	FISCAL YEAR	SHEET NO.	TOTAL SHEETS
5	MO		19	53	



Note: C2 bars in curb to be spaced at abt. 12" cts. from end post to end post on bridges having no outlets.

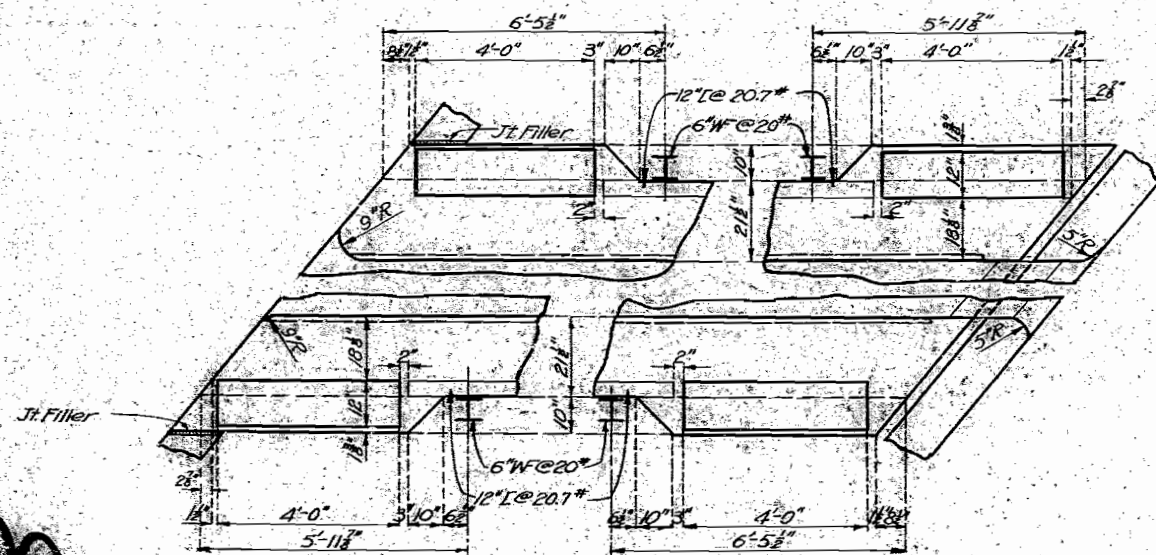


Note: Channel rail to be adjusted for horizontal alignment by use of full size metal shims placed between 6" W and connection flange. Shims of 1/8" thickness to be furnished with structural steel. Cost of shims to be included in price bid for other items.



Note: Use bevel as shown for exposed faces of all filled joints.

DETAILS OF BEVEL FOR FILLED JOINTS



GENERAL NOTES

Top of curbs and end posts to be built parallel to grade. Vertical faces of end posts to be vertical. All exposed edges of end posts to be beveled. 6" W posts to be set normal to grade. 1/2" L rails shall be fabricated to conform with horizontal and vertical alignment of curb.

BRIDGE OVER WABASH RAILROAD

STATE ROAD FROM LIVONIA EAST TO ROUTE 63
ABOUT 2.5 MILES S. OF GLENWOOD
PROJECT NO. FG-302(7) (RTE. 136) STA. 334 + 62.94

SC. HUYLER

COUNTY

A-116

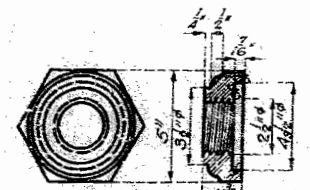
DRAWN Mar. 1957 BY WGS.
TRACED Mar. 1957 BY B.E.G.
CHECKED Mar. 1957 BY G.F.K.

Sheet No. 6 of 7.
NO CONSTRUCTION CHANGES

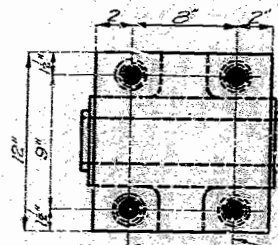
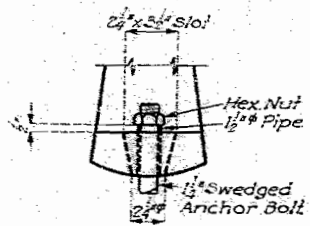
398

MISSOURI STATE HIGHWAY DEPARTMENT

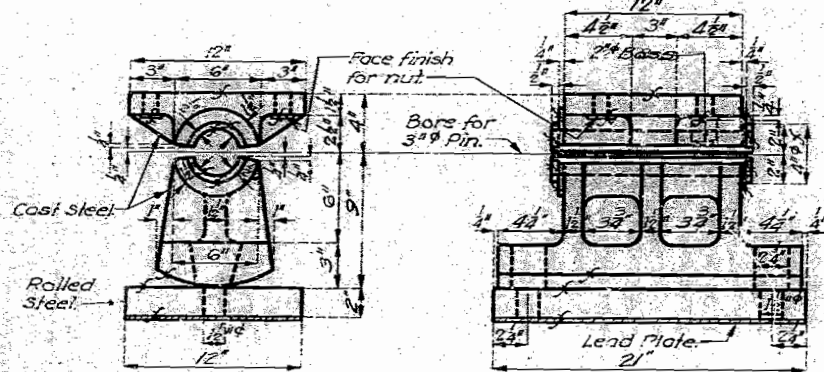
FED. ROAD DIST. NO.	STATE	FED. AID PROJ. NO.	FISC. YEAR	SHEET NO.	TOTAL SHEETS
5	MO		19	54	



CAST STEEL NUT
16-Required
8-3" Rolled steel pins required.

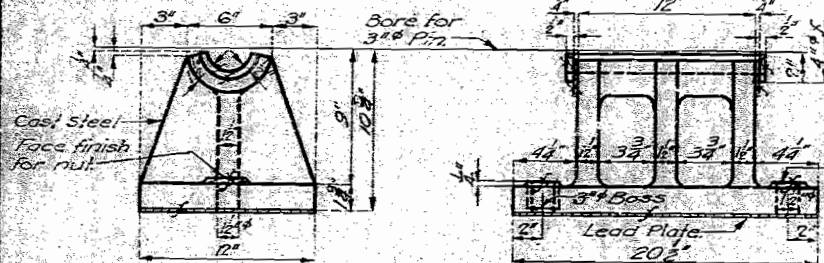


Drill holes for 1" turn bolts.



EXPANSION ROCKER
4-Required

Note: Cast steel cap same as shown above.

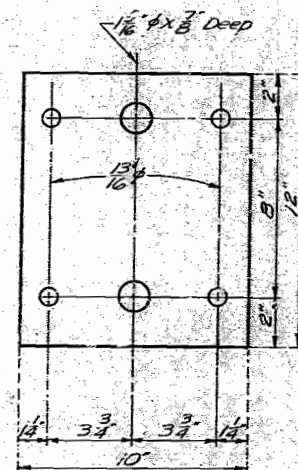


FIXED PEDESTAL

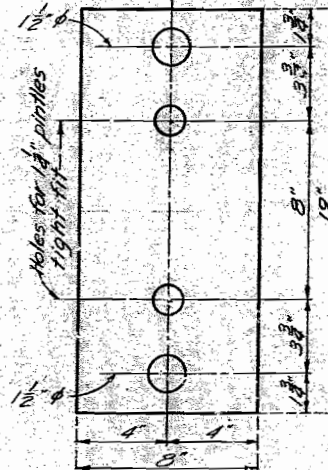
Note: Finish all surfaces marked f.
All fillets shall have 3/4" radius.
Material shall be cast steel except as noted.
All pins, bolts, pipe sleeves, and rolled steel plates shall be paid for as structural steel.
Anchor bolts shall be 1 1/2" swaged bolts with Hex. nuts and shall extend 12" into concrete.

DETAILS OF BEARING CASTINGS AT INT. BENTS

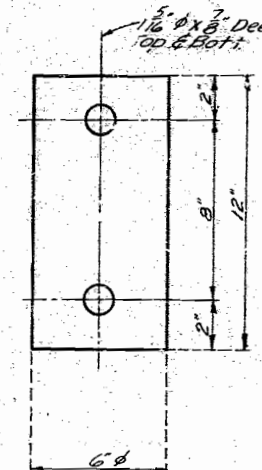
Note: Lead plates under bearings shall be approximately 5" thickness and weigh 8#/sq. ft.
Cost of lead plates shall be included in price bid for other items.



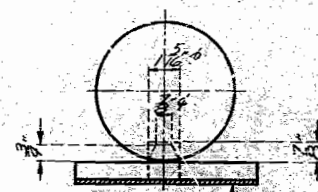
TOP PLATE
8-Required



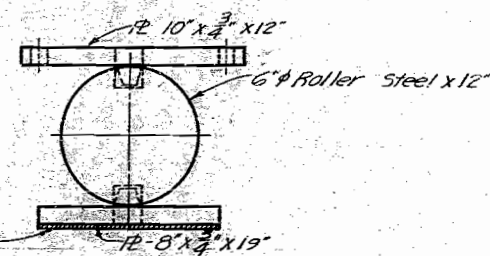
BOTT. PLATE
8-Required



ROLLER
8-Required



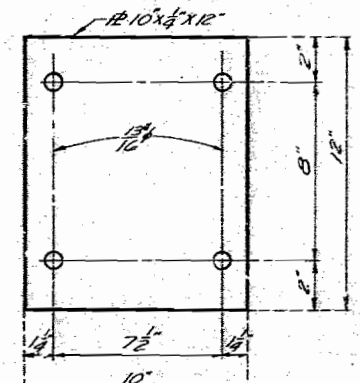
DETAILS OF PINTLE
32-Required



EXPANSION

Note: Material for plates and pintles shall be U.S.S. T-1 Alloy Steel or equivalent. Material for rollers shall be cold rolled carbon steel A.I.S.I. - C-1042 or C-1045 (turned and polished).
Anchor bolts shall be 1 1/2" swaged bolts with Hex. nuts and shall extend 12" into concrete and to be paid for as structural steel.

DETAILS OF BEARINGS AT END BENTS



4-Required

DETAILS OF FILLER PLATE
(Str. @ Bl. No. 1 - Str. @ Bl. No. 2, 3 & 4)

399

Assembled Feb. 1957 by W.G.S. & J.C.F.
Checked March 1957 by C.F.K.

Note: This drawing is not to scale. Follow dimensions.

Sheet No. 1 of 7

NO CONSTRUCTION CHANGES

BRIDGE OVER WABASH RAILROAD

STATE ROAD FROM LIVONIA EAST TO ROUTE 63
ABOUT 2.5 MILES S. OF GLENWOOD
PROJECT NO. PG-302(7) (RTE. 136) STA. 334 + 62.94

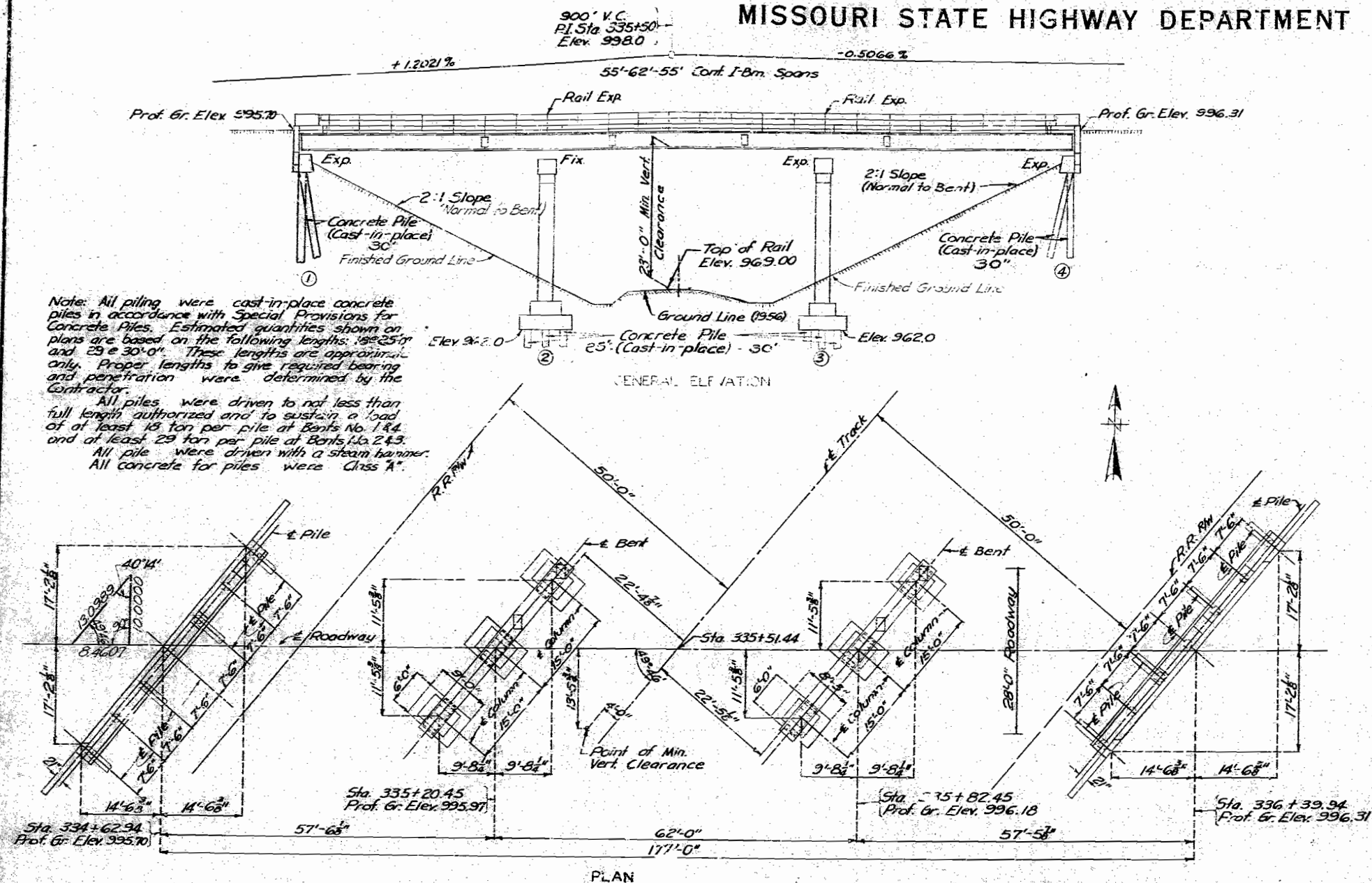
SCHUYLER COUNTY

FINISHED

A-116

MISSOURI STATE HIGHWAY DEPARTMENT

FED. ROAD DIST. NO.	STATE	FED. AID PROJ. NO.	FISCAL YEAR	SHEET NO.	TOTAL SHEET
5	MO.	FG-3027	1958		



COMPLETE BILL OF REINFORCING STEEL

No.	Size	Length	Mark	Location	Bending Sketches & Cutting Diagrams	No.	Size	Length	Mark	Location
End Bents No. 1 & 4						Superstructure				
32	#6	25'-6"	H1	Beam						

FINAL QUANTITIES			
Item	Substr.	Superstr.	Total
Class 1 Excavation for Structures	Cu. Yds. 259		259
Class "B" Concrete	Cu. Yds. 135.5		135.5
Class "B1" Concrete	Cu. Yds.	135.7	135.7
Reinforcing Steel	Lbs. 17,950	38,590	56,540
Fabricated Structural Steel	Lbs.	130,190	130,190
Steel Castings	Lbs.	2750	2750
Concrete Pits-in-place	Lin. Ft. 1169		1169

Note: All excavation for bridge were paid for as Class 1 Excavation for Structures.
Class "B" concrete in end posts were included in Estimated Quantities for Class "B-1" concrete for superstructure.
Final pay weight for Fabricated Structural Steel was based on using field rivets except for bolted connections specified for handrail.

GENERAL NOTES:

Design Specifications: A.A.S.H.O. -1953
Loading: H20-44

Structural Steel Stress: 18,000 psi

Reinforcing Steel Stress: 20,000 psi.

Concrete Class "B" Stress: 1200 psi

Concrete, Class B-Stress: 1200 psi.
Concrete for superstructure was

Concrete for superstructure was
Concrete for substructure was

Concrete for Substructure was

Paint: Shop none; Field, contact surfaces of bolted field connections one coat of red lead and surfaces inaccessible after erection three coats of red lead. All other exposed surfaces first coat red lead, second coat brown, third coat aluminum. Payment for cleaning and painting such surfaces were included in price bid for items painted.

Steel Shells for Cast-in-place Piles were painted as specified for steel piles in Section 22-9C of the Standard Specifications.

Where joint fillers specified on the plans if conformed with the requirements for Gray Rubber Compound Joints as given in Section 59-22B of the Standard Specifications.

Field connections were high tensile steel bolts with carburized washers in place of rivets except for connections noted in handrail details. See Standard Specifications.

High tensile steel bolts were used and they were placed in such a manner that the nuts will always be in the least exposed position.

A rubbed surface finish were required on all exposed surfaces of concrete end posts above top of curb.

A minimum vertical clearance of 22'-0" from top of rails and a minimum lateral clearance of 8'-6" from centerline of tracks were maintained over railroad tracks during construction.

B.M. ~ Bolt in Top of Rt. Wing Bent #4
Sta. 336+39.94 Elev. 996.86 (U.S.G.S. Datum)

BRIDGE OVER WABASH RAILROAD

STATE ROAD FROM LIVONIA EAST TO ROUTE 63

ABOUT 2.5 MILES S. OF GLENWOOD

PROJECT NO. FG-302 (7) (RTE. 136) STA. 334 + 62.94

SCHUYLER

COUNTY

SUBMITTED BY: D. Williams DATE 11-15-1957

BRIDGE ENGINEER
Dated 20.7.54 1-15-1954

STD. C-110R5

A-116

Drawn Mar. 1957 by M.H.P.
Checked Mar 1957 by A.F.K.

Note: This drawing is not to scale. Follow dimensions.

Sheet No. 1A of 1

FINAL PLANS



Missouri Department of Transportation
Bridge Inventory and Inspection System
Structural Inventory & Appraisal Sheet

November 13, 2019
11:03:41am

COUNTY : SCHUYLER BRIDGE : A0116 REVIEW STATUS : APPROVED NBI STATUS : P
RECORD TYPE : ROUTE CARRIED 'ON' STRUCT RUN DATE : 1/30/2017 SUBMITTAL YEAR : 2016

GENERAL STRUCTURE INFORMATION			ROUTE DESIGNATION INFORMATION		
1	State	MISSOURI	5A	Record Type	ROUTE CARRIED 'ON' STRUCT
2	District	NE	5B	Route Signing Prefix	US
3	County	SCHUYLER	5C	Designated Level of Service	MAINLINE
8	Federal ID No.	95	5D	Route Number	00136
27	Year Built	1958	5E	Directional Suffix	NOT APPLICABLE
106	Year Reconstructed	0	7	Facility Carried	US 136 E
42A	Type of Service On	HIGHWAY	12	Base Hwy. Network	NO
21	Structure Maintenance	STATE HIGHWAY AGENCY	13A	LRS Inventory Route No.	
22	Structure Owner	STATE HIGHWAY AGENCY	13B	Subroute No.	
33	Br. Median Code	NO MEDIAN	20	Toll Status	ON FREE ROAD
37	Historical Significance	NOT ELIGIBLE FOR NR OF HP	26	Functional Classification	06-RURAL MINOR ARTERIAL
101	Parallel Struc Desg	NONE EXISTS	28A	Lanes on Structure	02
103	Temporary Structure	NOT TEMPORARY	100	STRAHNET Designation	RTE NOT A DEFENSE HWY
112	NBIS Bridge Length	YES	104	National Highway System	NOT ON NHS
			105	Federal Lands Highway	NOT APPLICABLE
			110	Designated Nat. Network	NO
STRUCTURE LOCATION INFORMATION			STRUCTURE TRAFFIC INFORMATION		
4	Place	GLENWOOD	29	AADT	1248
	Code	27532	30	AADT Year	2016
9	Location	S 28 T 66 N R 15 W	102	Direction of Traffic	2-WAY TRAFFIC
11	Milepoint	188.98 miles	109	AADT Truck Percent	11%
16	Latitude	40 D 29 M 34 S	114	Future AADT	1622
17	Longitude	92 D 34 M 41 S	115	Future AADT Year	2037
UNDERRECORD INFORMATION			STRUCTURE GEOMETRIC INFORMATION		
6	Features Intersected	ABANDONED RR	10	Inventory Rte. Vert. Clear	99 Ft. 99 In.
42B	Type of Service Under	OTHER	19	By pass Detour Length	11.78 miles
28B	Lanes Under Structure	00	32	Approach Roadway Width	36 Ft. 0 In.
54A	Vert. Clearance Ref.	N/A	34	Skew	40.00 Degrees
54B	Vert. Clearance	0 Ft. 0 In.	35	Struct. Flared	NO
55A	Rt. Lat Clear Ref.	N/A	47	Total Horiz. Clear	27 Ft. 10 In.
55B	Rt. Lat Clearance	0 Ft. 0 In.	48	Maximum Span Length	61 Ft. 11 In.
56	Left Lat Clearance	0 Ft. 0 In.	49	Structure Length	176 Ft. 0 In.
38	Navigation Control	N/A	50A	Left Curb/Sidewalk Width	0 Ft. 0 In.
39	Nav Vertical Clear	0 Ft. 0 In.	50B	Right Curb/Sidewalk Width	0 Ft. 0 In.
40	Nav Horizontal Clear	0 Ft. 0 In.	51	Curb to Curb Br. Width	27 Ft. 10 In.
111	Nav. Pier Protection		52	Deck Width (Out-Out)	33 Ft. 1 In.
116	Nav. Cl. Vert. Clear		53	Vert. Clearance Over Deck	99 Ft. 99 In.

Design_No = A0116



Missouri Department of Transportation
Bridge Inventory and Inspection System
Structural Inventory & Appraisal Sheet

November 13, 2019
11:03:41am

COUNTY : SCHUYLER BRIDGE : A0116 REVIEW STATUS : APPROVED NBI STATUS : P
RECORD TYPE : ROUTE CARRIED 'ON' STRUCT RUN DATE : 1/30/2017 SUBMITTAL YEAR : 2016

LOAD RATING AND POSTING INFORMATION			MATERIAL/CONSTRUCTION INFORMATION		
31	Design Load	H 20	43A	Main Struc. Mat type	STEEL CONTINUOUS
41	Structure Status	A - OPEN NO RESTRICTIONS	43B	Main struc Constr. Type	STRINGER/MULTIBEAM - GRD
63	Oper. Rating Meth.	ALLOWABLE STRESS	45	# of Main Spans	3
64	Operating Rating	46 Tons.	44A	Appr Struc. Mat type	
65	Inventory Rating Meth	ALLOWABLE STRESS	44B	Appr Struc. Cnstr. type	
66	Inventory Rating	27 Tons.	46	# of Approach Span	0
70	Bridge Posting Code	=>LEGAL LOADS	107	Deck Mat/Constr.	1 CONCRETE CIP
PROPOSED IMPROVEMENT INFORMATION			108A	Wear Surf Mat/Constr.	6 BITUMINOUS
	Sufficiency Rating	69.4 Percent	108B	Membrane Mat/Constr.	0 NONE
	Deficiency Rating	STRUCTURAL	108C	Deck Protect Mat/Constr.	0 NONE
	Funding Eligibility	PARTIAL	CONDITION RATING INFORMATION		
75A	Proposed Work	REHAB-GENERAL DETERIORAT	58	Deck Cond. Rating	3
75B	Work Done By	Contract	59	Superstructure Cond. Rating	7
76	New Struc Length	209 Ft. 11 In.	60	Substructure Cond. Rating	6
94	Struc Improve Cost	\$ 496,000	61	Channel /Channel Protection Cond. Rating	N
95	Roadway Improve Cost	\$ 49,000	62	Culvert Cond. Rating	N
96	Total Project Cost	\$ 745,000	INSPECTION INFORMATION		
97	Year of Cost Estimates	2017	90	Gen. Insp Date	11 / 15
APPRAISAL RATING INFORMATION			91	Gen. Insp. Frequency	24 Months
36A	Br. Rail App. Rating	DOES NOT MEET ACCEPT STND	92A	Frac. Critical Inspection	N Months
36B	Transition Rail App. Rating	DOES NOT MEET ACCEPT STND	93A	Frac. Critical Insp. Date	
36C	Approach Rail App. Rating	DOES NOT MEET ACCEPT STND	92B	Underwater Inspection	N Months
36D	Rail End Treat. App. Rating	DOES NOT MEET ACCEPT STND	93B	Underwater Insp. Date	
67	Struc Eval App. Rating	6	92C	Special Inspection	N Months
68	Deck Geometry App. Rating	5	93C	Special Inspection Date	
69	Underclearance App. Rating	N	BORDER BRIDGE INFORMATION		
71	Waterway Adeq. App. Rating	N	98	Neighboring State Code	
72	Approach Road App. Rating	6	98B	Neighboring State % Respon	
113	Scour Assess App. Rating	N	99	Neighboring State Struc. No.	
APPROVED POSTING INFORMATION			FIELD POSTING INFORMATION		
Approved Posting Category S-1			Field Posting Category S-1		
Ton1 Ton2 Ton3			Ton1 Ton2 Ton3		
Tonnage Values for Posting Sign			Tonnage Values for Posting Sign		
General Text for Posting Sign			General Text for Posting Sign		
NO POSTING REQUIRED			NO POSTING REQUIRED		

Design_No = A0116



Missouri Department of Transportation
Bridge Inventory and Inspection System
Structural Inventory & Appraisal Sheet

November 13, 2019
11:03:41am

COUNTY : SCHUYLER BRIDGE : A0116 REVIEW STATUS : APPROVED NBI STATUS : P
RECORD TYPE : ROUTE CARRIED 'ON' STRUCT RUN DATE : 1/10/2018 SUBMITTAL YEAR : 2017

GENERAL STRUCTURE INFORMATION			ROUTE DESIGNATION INFORMATION		
1	State	MISSOURI	5A	Record Type	ROUTE CARRIED 'ON' STRUCT
2	District	NE	5B	Route Signing Prefix	US
3	County	SCHUYLER	5C	Designated Level of Service	MAINLINE
8	Federal ID No.	95	5D	Route Number	00136
27	Year Built	1958	5E	Directional Suffix	NOT APPLICABLE
106	Year Reconstructed	0	7	Facility Carried	US 136 E
42A	Type of Service On	HIGHWAY	12	Base Hwy. Network	NO
21	Structure Maintenance	STATE HIGHWAY AGENCY	13A	LRS Inventory Route No.	
22	Structure Owner	STATE HIGHWAY AGENCY	13B	Subroute No.	
33	Br. Median Code	NO MEDIAN	20	Toll Status	ON FREE ROAD
37	Historical Significance	NOT ELIGIBLE FOR NR OF HP	26	Functional Classification	06-RURAL MINOR ARTERIAL
101	Parallel Struc Desg	NONE EXISTS	28A	Lanes on Structure	02
103	Temporary Structure	NOT TEMPORARY	100	STRAHNET Designation	RTE NOT A DEFENSE HWY
112	NBIS Bridge Length	YES	104	National Highway System	NOT ON NHS
			105	Federal Lands Highway	NOT APPLICABLE
			110	Designated Nat. Network	NO
STRUCTURE LOCATION INFORMATION			STRUCTURE TRAFFIC INFORMATION		
4	Place	GLENWOOD	29	AADT	1248
	Code	27532	30	AADT Year	2016
9	Location	S 28 T 66 N R 15 W	102	Direction of Traffic	2-WAY TRAFFIC
11	Milepoint	188.98 miles	109	AADT Truck Percent	19%
16	Latitude	40 D 29 M 34 S	114	Future AADT	1622
17	Longitude	92 D 34 M 41 S	115	Future AADT Year	2036
UNDERRECORD INFORMATION			STRUCTURE GEOMETRIC INFORMATION		
6	Features Intersected	ABANDONED RR	10	Inventory Rte. Vert. Clear	99 Ft. 99 In.
42B	Type of Service Under	OTHER	19	By pass Detour Length	11.78 miles
28B	Lanes Under Structure	00	32	Approach Roadway Width	36 Ft. 0 In.
54A	Vert. Clearance Ref.	N/A	34	Skew	40.00 Degrees
54B	Vert. Clearance	0 Ft. 0 In.	35	Struct. Flared	NO
55A	Rt. Lat Clear Ref.	N/A	47	Total Horiz. Clear	27 Ft. 10 In.
55B	Rt. Lat Clearance	0 Ft. 0 In.	48	Maximum Span Length	61 Ft. 11 In.
56	Left Lat Clearance	0 Ft. 0 In.	49	Structure Length	176 Ft. 0 In.
38	Navigation Control	N/A	50A	Left Curb/Sidewalk Width	0 Ft. 0 In.
39	Nav Vertical Clear	0 Ft. 0 In.	50B	Right Curb/Sidewalk Width	0 Ft. 0 In.
40	Nav Horizontal Clear	0 Ft. 0 In.	51	Curb to Curb Br. Width	27 Ft. 10 In.
111	Nav. Pier Protection		52	Deck Width (Out-Out)	33 Ft. 1 In.
116	Nav. Cl. Vert. Clear		53	Vert. Clearance Over Deck	99 Ft. 99 In.

Design_No = A0116



Missouri Department of Transportation
Bridge Inventory and Inspection System
Structural Inventory & Appraisal Sheet

November 13, 2019
11:03:41am

COUNTY : SCHUYLER BRIDGE : A0116 REVIEW STATUS : APPROVED NBI STATUS : P
RECORD TYPE : ROUTE CARRIED 'ON' STRUCT RUN DATE : 1/10/2018 SUBMITTAL YEAR : 2017

LOAD RATING AND POSTING INFORMATION			MATERIAL/CONSTRUCTION INFORMATION		
31	Design Load	H 20	43A	Main Struc. Mat type	STEEL CONTINUOUS
41	Structure Status	A - OPEN NO RESTRICTIONS	43B	Main struc Constr. Type	STRINGER/MULTIBEAM - GRD
63	Oper. Rating Meth.	ALLOWABLE STRESS	45	# of Main Spans	3
64	Operating Rating	46 Tons.	44A	Appr Struc. Mat type	
65	Inventory Rating Meth	ALLOWABLE STRESS	44B	Appr Struc. Cnstr. type	
66	Inventory Rating	27 Tons.	46	# of Approach Span	0
70	Bridge Posting Code	=>LEGAL LOADS	107	Deck Mat/Constr.	1 CONCRETE CIP
PROPOSED IMPROVEMENT INFORMATION			108A	Wear Surf Mat/Constr.	6 BITUMINOUS
	Sufficiency Rating	69.4 Percent	108B	Membrane Mat/Constr.	0 NONE
	Deficiency Rating	STRUCTURAL	108C	Deck Protect Mat/Constr.	0 NONE
	Funding Eligibility	PARTIAL	CONDITION RATING INFORMATION		
75A	Proposed Work	REHAB-GENERAL DETERIORAT	58	Deck Cond. Rating	3
75B	Work Done By	Contract	59	Superstructure Cond. Rating	7
76	New Struc Length	209 Ft. 11 In.	60	Substructure Cond. Rating	6
94	Struc Improve Cost	\$ 496,000	61	Channel /Channel Protection Cond. Rating	N
95	Roadway Improve Cost	\$ 49,000	62	Culvert Cond. Rating	N
96	Total Project Cost	\$ 745,000	INSPECTION INFORMATION		
97	Year of Cost Estimates	2018	90	Gen. Insp Date	11 / 17
APPRAISAL RATING INFORMATION			91	Gen. Insp. Frequency	24 Months
36A	Br. Rail App. Rating	DOES NOT MEET ACCEPT STND	92A	Frac. Critical Inspection	N Months
36B	Transition Rail App. Rating	DOES NOT MEET ACCEPT STND	93A	Frac. Critical Insp. Date	
36C	Approach Rail App. Rating	DOES NOT MEET ACCEPT STND	92B	Underwater Inspection	N Months
36D	Rail End Treat. App. Rating	DOES NOT MEET ACCEPT STND	93B	Underwater Insp. Date	
67	Struc Eval App. Rating	6	92C	Special Inspection	N Months
68	Deck Geometry App. Rating	5	93C	Special Inspection Date	
69	Underclearance App. Rating	N	BORDER BRIDGE INFORMATION		
71	Waterway Adeq. App. Rating	N	98	Neighboring State Code	
72	Approach Road App. Rating	6	98B	Neighboring State % Respon	
113	Scour Assess App. Rating	N	99	Neighboring State Struc. No.	
APPROVED POSTING INFORMATION			FIELD POSTING INFORMATION		
Approved Posting Category S-1			Field Posting Category S-1		
Ton1 Ton2 Ton3			Ton1 Ton2 Ton3		
Tonnage Values for Posting Sign			Tonnage Values for Posting Sign		
General Text for Posting Sign			General Text for Posting Sign		
NO POSTING REQUIRED			NO POSTING REQUIRED		

Design_No = A0116



Missouri Department of Transportation
Bridge Inventory and Inspection System
Structural Inventory & Appraisal Sheet

November 13, 2019
11:03:41am

COUNTY : SCHUYLER BRIDGE : A0116 REVIEW STATUS : APPROVED NBI STATUS : P
RECORD TYPE : ROUTE CARRIED 'ON' STRUCT RUN DATE : 1/10/2019 SUBMITTAL YEAR : 2018

GENERAL STRUCTURE INFORMATION			ROUTE DESIGNATION INFORMATION		
1	State	MISSOURI	5A	Record Type	ROUTE CARRIED 'ON' STRUCT
2	District	NE	5B	Route Signing Prefix	US
3	County	SCHUYLER	5C	Designated Level of Service	MAINLINE
8	Federal ID No.	95	5D	Route Number	00136
27	Year Built	1958	5E	Directional Suffix	NOT APPLICABLE
106	Year Reconstructed	0	7	Facility Carried	US 136 E
42A	Type of Service On	HIGHWAY	12	Base Hwy. Network	NO
21	Structure Maintenance	STATE HIGHWAY AGENCY	13A	LRS Inventory Route No.	
22	Structure Owner	STATE HIGHWAY AGENCY	13B	Subroute No.	
33	Br. Median Code	NO MEDIAN	20	Toll Status	ON FREE ROAD
37	Historical Significance	NOT ELIGIBLE FOR NR OF HP	26	Functional Classification	06-RURAL MINOR ARTERIAL
101	Parallel Struc Desg	NONE EXISTS	28A	Lanes on Structure	02
103	Temporary Structure	NOT TEMPORARY	100	STRAHNET Designation	RTE NOT A DEFENSE HWY
112	NBIS Bridge Length	YES	104	National Highway System	NOT ON NHS
			105	Federal Lands Highway	NOT APPLICABLE
			110	Designated Nat. Network	NO
STRUCTURE LOCATION INFORMATION			STRUCTURE TRAFFIC INFORMATION		
4	Place	GLENWOOD	29	AADT	1259
	Code	27532	30	AADT Year	2017
9	Location	S 28 T 66 N R 15 W	102	Direction of Traffic	2-WAY TRAFFIC
11	Milepoint	188.98 miles	109	AADT Truck Percent	15%
16	Latitude	40 D 29 M 34 S	114	Future AADT	1636
17	Longitude	92 D 34 M 41 S	115	Future AADT Year	2037
UNDERRECORD INFORMATION			STRUCTURE GEOMETRIC INFORMATION		
6	Features Intersected	ABANDONED RR	10	Inventory Rte. Vert. Clear	99 Ft. 99 In.
42B	Type of Service Under	OTHER	19	By pass Detour Length	11.78 miles
28B	Lanes Under Structure	00	32	Approach Roadway Width	36 Ft. 0 In.
54A	Vert. Clearance Ref.	N/A	34	Skew	40.00 Degrees
54B	Vert. Clearance	0 Ft. 0 In.	35	Struct. Flared	NO
55A	Rt. Lat Clear Ref.	N/A	47	Total Horiz. Clear	27 Ft. 10 In.
55B	Rt. Lat Clearance	0 Ft. 0 In.	48	Maximum Span Length	61 Ft. 11 In.
56	Left Lat Clearance	0 Ft. 0 In.	49	Structure Length	176 Ft. 0 In.
38	Navigation Control	N/A	50A	Left Curb/Sidewalk Width	0 Ft. 0 In.
39	Nav Vertical Clear	0 Ft. 0 In.	50B	Right Curb/Sidewalk Width	0 Ft. 0 In.
40	Nav Horizontal Clear	0 Ft. 0 In.	51	Curb to Curb Br. Width	27 Ft. 10 In.
111	Nav. Pier Protection		52	Deck Width (Out-Out)	33 Ft. 1 In.
116	Nav. Cl. Vert. Clear		53	Vert. Clearance Over Deck	99 Ft. 99 In.

Design_No = A0116



Missouri Department of Transportation
Bridge Inventory and Inspection System
Structural Inventory & Appraisal Sheet

November 13, 2019
11:03:41am

COUNTY : SCHUYLER BRIDGE : A0116 REVIEW STATUS : APPROVED NBI STATUS : P
RECORD TYPE : ROUTE CARRIED 'ON' STRUCT RUN DATE : 1/10/2019 SUBMITTAL YEAR : 2018

LOAD RATING AND POSTING INFORMATION			MATERIAL/CONSTRUCTION INFORMATION		
31	Design Load	H 20	43A	Main Struc. Mat type	STEEL CONTINUOUS
41	Structure Status	A - OPEN NO RESTRICTIONS	43B	Main struc Constr. Type	STRINGER/MULTIBEAM - GRD
63	Oper. Rating Meth.	ALLOWABLE STRESS	45	# of Main Spans	3
64	Operating Rating	46 Tons.	44A	Appr Struc. Mat type	
65	Inventory Rating Meth	ALLOWABLE STRESS	44B	Appr Struc. Cnstr. type	
66	Inventory Rating	27 Tons.	46	# of Approach Span	0
70	Bridge Posting Code	=>LEGAL LOADS	107	Deck Mat/Constr.	1 CONCRETE CIP
PROPOSED IMPROVEMENT INFORMATION			108A	Wear Surf Mat/Constr.	6 BITUMINOUS
	Sufficiency Rating	69.4 Percent	108B	Membrane Mat/Constr.	0 NONE
	Deficiency Rating	STRUCTURAL	108C	Deck Protect Mat/Constr.	0 NONE
	Funding Eligibility	PARTIAL	CONDITION RATING INFORMATION		
75A	Proposed Work	REHAB-GENERAL DETERIORAT	58	Deck Cond. Rating	3
75B	Work Done By	Contract	59	Superstructure Cond. Rating	7
76	New Struc Length	209 Ft. 11 In.	60	Substructure Cond. Rating	6
94	Struc Improve Cost	\$ 496,000	61	Channel /Channel Protection Cond. Rating	N
95	Roadway Improve Cost	\$ 49,000	62	Culvert Cond. Rating	N
96	Total Project Cost	\$ 745,000	INSPECTION INFORMATION		
97	Year of Cost Estimates	2019	90	Gen. Insp Date	11 / 17
APPRAISAL RATING INFORMATION			91	Gen. Insp. Frequency	24 Months
36A	Br. Rail App. Rating	DOES NOT MEET ACCEPT STND	92A	Frac. Critical Inspection	N Months
36B	Transition Rail App. Rating	DOES NOT MEET ACCEPT STND	93A	Frac. Critical Insp. Date	
36C	Approach Rail App. Rating	DOES NOT MEET ACCEPT STND	92B	Underwater Inspection	N Months
36D	Rail End Treat. App. Rating	DOES NOT MEET ACCEPT STND	93B	Underwater Insp. Date	
67	Struc Eval App. Rating	6	92C	Special Inspection	N Months
68	Deck Geometry App. Rating	5	93C	Special Inspection Date	
69	Underclearance App. Rating	N	BORDER BRIDGE INFORMATION		
71	Waterway Adeq. App. Rating	N	98	Neighboring State Code	
72	Approach Road App. Rating	6	98B	Neighboring State % Respon	
113	Scour Assess App. Rating	N	99	Neighboring State Struc. No.	
APPROVED POSTING INFORMATION			FIELD POSTING INFORMATION		
Approved Posting Category S-1			Field Posting Category S-1		
Ton1 Ton2 Ton3			Ton1 Ton2 Ton3		
Tonnage Values for Posting Sign			Tonnage Values for Posting Sign		
General Text for Posting Sign			General Text for Posting Sign		
NO POSTING REQUIRED			NO POSTING REQUIRED		

Design_No = A0116



Missouri Department of Transportation
Bridge Inventory and Inspection System
Structural Inventory & Appraisal Sheet

November 13, 2019
11:03:41am

COUNTY : SCHUYLER BRIDGE : A0116 REVIEW STATUS : REVIEW NBI STATUS : T
RECORD TYPE : ROUTE CARRIED 'ON' STRUCT RUN DATE : 7/22/2019 SUBMITTAL YEAR : 2019

GENERAL STRUCTURE INFORMATION			ROUTE DESIGNATION INFORMATION		
1	State	MISSOURI	5A	Record Type	ROUTE CARRIED 'ON' STRUCT
2	District	NE	5B	Route Signing Prefix	US
3	County	SCHUYLER	5C	Designated Level of Service	MAINLINE
8	Federal ID No.	95	5D	Route Number	00136
27	Year Built	1958	5E	Directional Suffix	NOT APPLICABLE
106	Year Reconstructed	0	7	Facility Carried	US 136 E
42A	Type of Service On	HIGHWAY	12	Base Hwy. Network	NO
21	Structure Maintenance	STATE HIGHWAY AGENCY	13A	LRS Inventory Route No.	
22	Structure Owner	STATE HIGHWAY AGENCY	13B	Subroute No.	
33	Br. Median Code	NO MEDIAN	20	Toll Status	ON FREE ROAD
37	Historical Significance	NOT ELIGIBLE FOR NR OF HP	26	Functional Classification	06-RURAL MINOR ARTERIAL
101	Parallel Struc Desg	NONE EXISTS	28A	Lanes on Structure	02
103	Temporary Structure	NOT TEMPORARY	100	STRAHNET Designation	RTE NOT A DEFENSE HWY
112	NBIS Bridge Length	YES	104	National Highway System	NOT ON NHS
			105	Federal Lands Highway	NOT APPLICABLE
			110	Designated Nat. Network	NO
STRUCTURE LOCATION INFORMATION			STRUCTURE TRAFFIC INFORMATION		
4	Place	GLENWOOD	29	AADT	1272
	Code	27532	30	AADT Year	2018
9	Location	S 28 T 66 N R 15 W	102	Direction of Traffic	2-WAY TRAFFIC
11	Milepoint	190.50 miles	109	AADT Truck Percent	13%
16	Latitude	40 D 29 M 34 S	114	Future AADT	1653
17	Longitude	92 D 34 M 41 S	115	Future AADT Year	2038
UNDERRECORD INFORMATION			STRUCTURE GEOMETRIC INFORMATION		
6	Features Intersected	ABANDONED RR	10	Inventory Rte. Vert. Clear	99 Ft. 99 In.
42B	Type of Service Under	OTHER	19	By pass Detour Length	11.88 miles
28B	Lanes Under Structure	00	32	Approach Roadway Width	36 Ft. 1 In.
54A	Vert. Clearance Ref.	N/A	34	Skew	40.00 Degrees
54B	Vert. Clearance	0 Ft. 0 In.	35	Struct. Flared	NO
55A	Rt. Lat Clear Ref.	N/A	47	Total Horiz. Clear	27 Ft. 11 In.
55B	Rt. Lat Clearance	0 Ft. 0 In.	48	Maximum Span Length	62 Ft. 0 In.
56	Left Lat Clearance	0 Ft. 0 In.	49	Structure Length	176 Ft. 10 In.
38	Navigation Control	N/A	50A	Left Curb/Sidewalk Width	0 Ft. 0 In.
39	Nav Vertical Clear	0 Ft. 0 In.	50B	Right Curb/Sidewalk Width	0 Ft. 0 In.
40	Nav Horizontal Clear	0 Ft. 0 In.	51	Curb to Curb Br. Width	27 Ft. 11 In.
111	Nav. Pier Protection		52	Deck Width (Out-Out)	33 Ft. 2 In.
116	Nav. Cl. Vert. Clear		53	Vert. Clearance Over Deck	99 Ft. 99 In.

Design_No = A0116



Missouri Department of Transportation
Bridge Inventory and Inspection System
Structural Inventory & Appraisal Sheet

November 13, 2019
11:03:41am

COUNTY : SCHUYLER BRIDGE : A0116 REVIEW STATUS : REVIEW NBI STATUS : T
RECORD TYPE : ROUTE CARRIED 'ON' STRUCT RUN DATE : 7/22/2019 SUBMITTAL YEAR : 2019

LOAD RATING AND POSTING INFORMATION			MATERIAL/CONSTRUCTION INFORMATION		
31	Design Load	H 20	43A	Main Struc. Mat type	STEEL CONTINUOUS
41	Structure Status	OPEN NO RESTRICTIONS	43B	Main struc Constr. Type	STRINGER/MULTIBEAM - GRD
63	Oper. Rating Meth.	ALLOWABLE STRESS	45	# of Main Spans	3
64	Operating Rating	46 Tons.	44A	Appr Struc. Mat type	000
65	Inventory Rating Meth	ALLOWABLE STRESS	44B	Appr Struc. Cnstr. type	000
66	Inventory Rating	27 Tons.	46	# of Approach Span	0
70	Bridge Posting Code	=>LEGAL LOADS	107	Deck Mat/Constr.	1 CONCRETE CIP
PROPOSED IMPROVEMENT INFORMATION			108A	Wear Surf Mat/Constr.	6 BITUMINOUS
Sufficiency Rating 69.4 Percent			108B	Membrane Mat/Constr.	0 NONE
Deficiency Rating STRUCTURAL			108C	Deck Protect Mat/Constr.	0 NONE
Funding Eligibility PARTIAL			CONDITION RATING INFORMATION		
75A	Proposed Work	REHAB-GENERAL DETERIORAT	58	Deck Cond. Rating	3
75B	Work Done By	Contract	59	Superstructure Cond. Rating	7
76	New Struc Length	209 Ft. 12 In.	60	Substructure Cond. Rating	6
94	Struc Improve Cost	\$ 496,000	61	Channel /Channel Protection Cond. Rating	N
95	Roadway Improve Cost	\$ 49,000	62	Culvert Cond. Rating	N
96	Total Project Cost	\$ 745,000	INSPECTION INFORMATION		
97	Year of Cost Estimates	2019	90	Gen. Insp Date	11 / 17
APPRAISAL RATING INFORMATION			91	Gen. Insp. Frequency	24 Months
36A	Br. Rail App. Rating	DOES NOT MEET ACCEPT STND	92A	Frac. Critical Inspection	N Months
36B	Transition Rail App. Rating	DOES NOT MEET ACCEPT STND	93A	Frac. Critical Insp. Date	
36C	Approach Rail App. Rating	DOES NOT MEET ACCEPT STND	92B	Underwater Inspection	N Months
36D	Rail End Treat. App. Rating	DOES NOT MEET ACCEPT STND	93B	Underwater Insp. Date	
67	Struc Eval App. Rating	6	92C	Special Inspection	N Months
68	Deck Geometry App. Rating	5	93C	Special Inspection Date	
69	Underclearance App. Rating	N	BORDER BRIDGE INFORMATION		
71	Waterway Adeq. App. Rating	N	98	Neighboring State Code	
72	Approach Road App. Rating	6	98B	Neighboring State % Respon	
113	Scour Assess App. Rating	N	99	Neighboring State Struc. No.	
APPROVED POSTING INFORMATION			FIELD POSTING INFORMATION		
Approved Posting Category S-1			Field Posting Category S-1		
Ton1 Ton2 Ton3			Ton1 Ton2 Ton3		
Tonnage Values for Posting Sign			Tonnage Values for Posting Sign		
General Text for Posting Sign			General Text for Posting Sign		
NO POSTING REQUIRED			NO POSTING REQUIRED		

Design_No = A0116